

M1 SATA mount and cable kit



The SATA mount and cable kit are for docking 2.5" SSD or HDD to ODROID-M1.

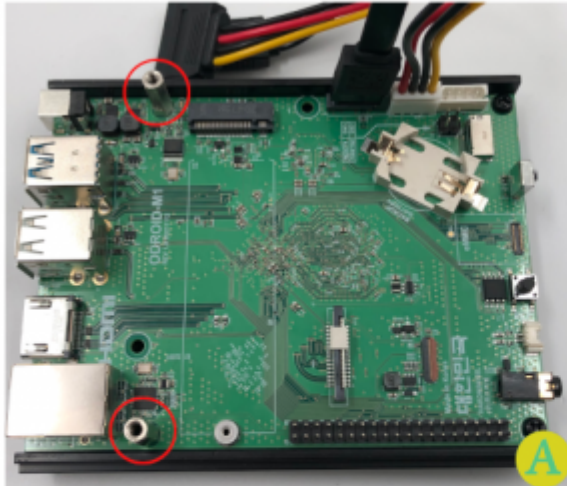


Don't worry if a black bolt and a steel spacer are left when you finish assembling.

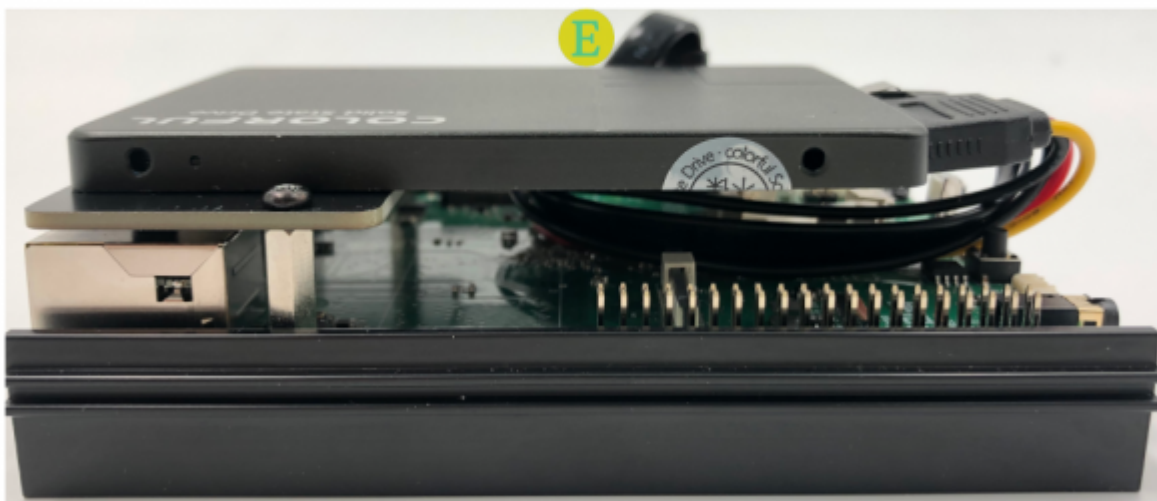


They are included one more spare each to the package.

Assembly Guide



A. Plug SATA power and data cable on the M1. Remove two black bolts and screw the steel spacer which is the package included.



B. Using two black bolts to combine the HDD Holder and an SSD like picture B.

C. Plug the other side of the SATA power and data cable

into the SSD.

D. Attach the HDD holder which is carrying on the SATA to the M1 and fasten two black bolts.

E. Gently rearrange the cables.

From:

<https://wiki.odroid.com/> - **ODROID Wiki**

Permanent link:

https://wiki.odroid.com/accessory/cables/sata_holder

Last update: **2022/03/29 11:25**

