

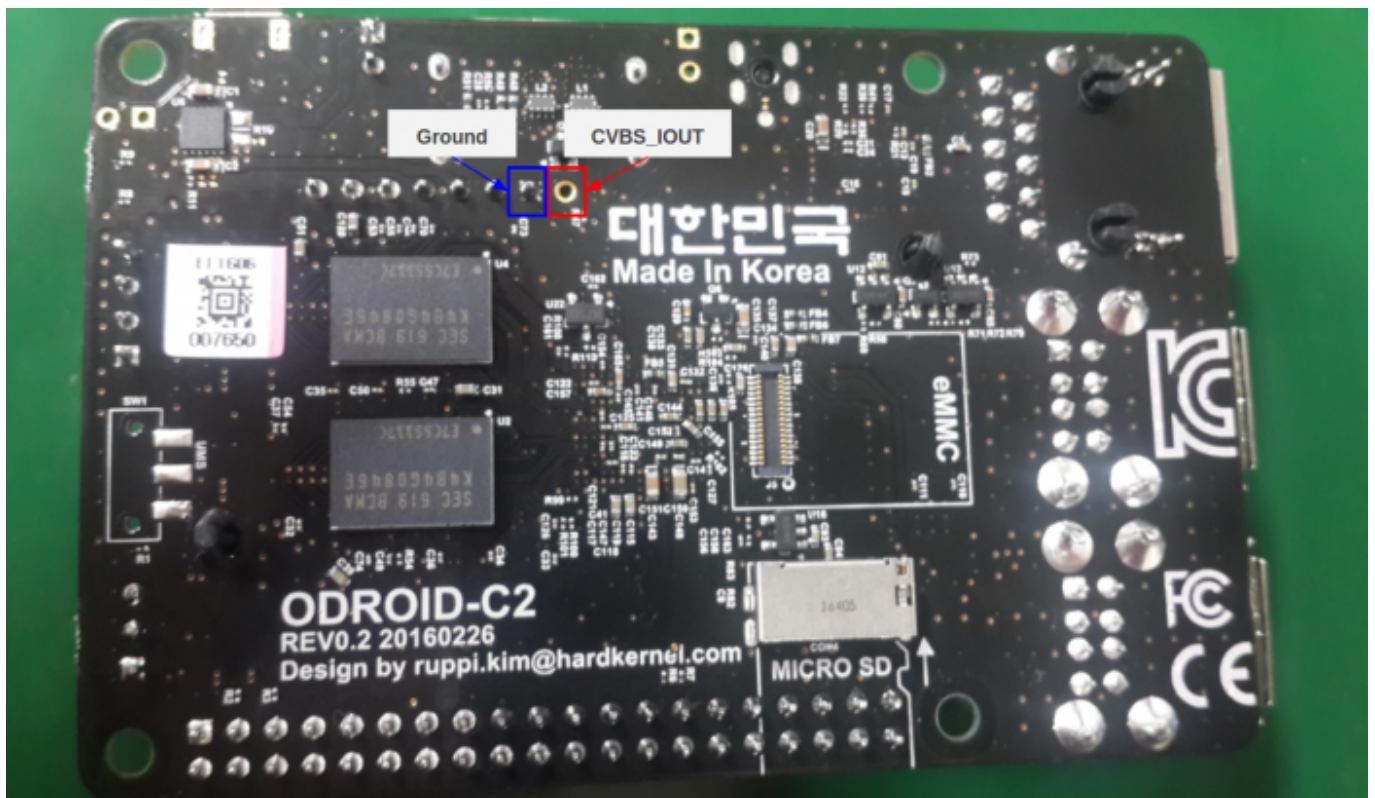
CVBS Video Output

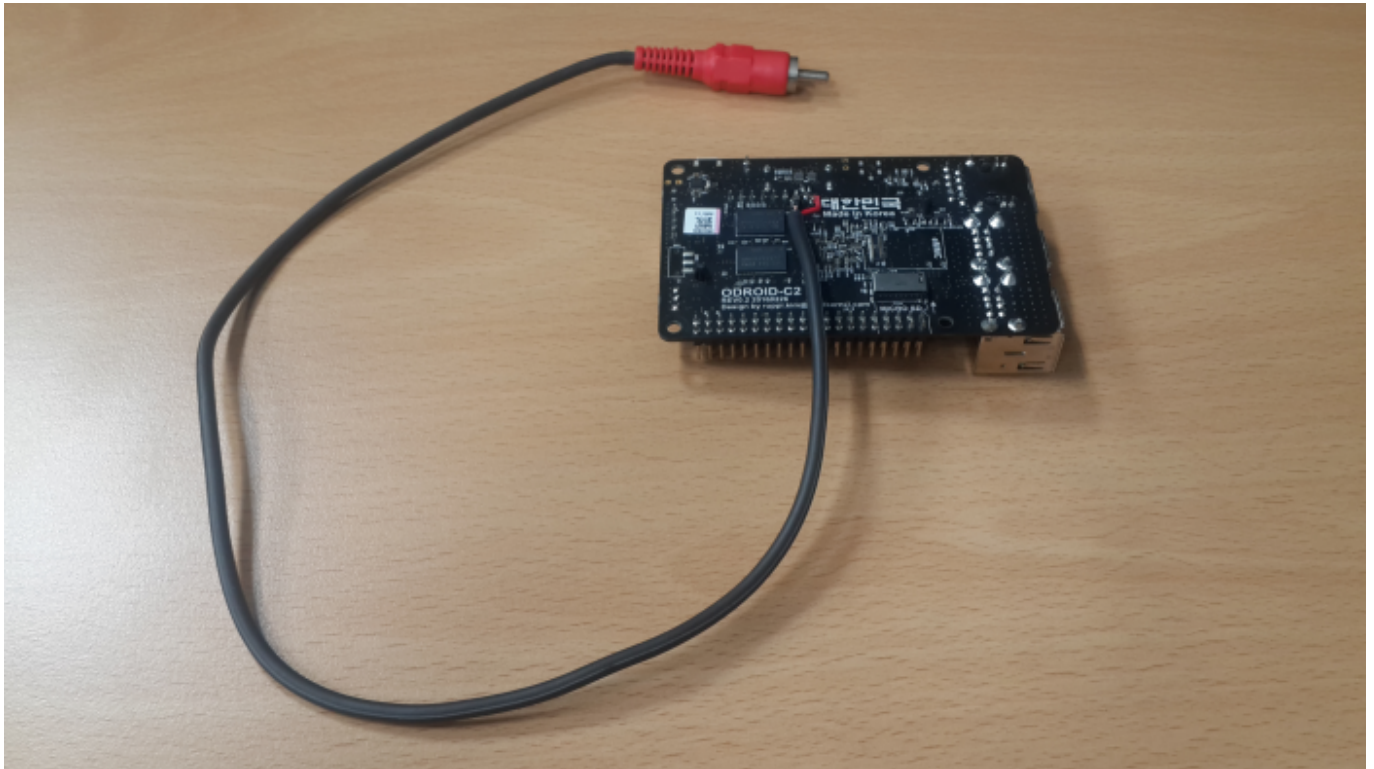
Hardware Example

The below picture is a sample guide.

You can find **CVBS** test point by header J7 near the HDMI connector.

We recommend using the board's backside point as shown in the picture. **Pin 1 of header J7** can be used as a Ground point.





Software Guide (1) - Ubuntu

- Ubuntu : Available with 3.14.79-89 (Oct 13, 2016) or higher version

There are two modes of CVBS, **480cvbs** and **576cvbs** on C2.

You need to modify boot.ini to set CVBS output.

```
setenv m "480cvbs"  
setenv cvbsmode "480cvbs"  
  
setenv bootargs ${bootargs} cvbsmode=${cvbsmode}
```

And make sure the **vout** mode is set as **hdmi** mode.

```
setenv vout "hdmi"
```

Overscan

Please refer to the following article.

<http://magazine.odroid.com/wp-content/uploads/ODROID-Magazine-201602.pdf#page=9>

As we tested cvbs mode with our monitors, overscan setting is needed.

For example, in case of 480cvbs mode, the following values can be used.

```
# echo 20 20 695 478 > /sys/class/graphics/fb0/window_axis
# echo 0x10001 > /sys/class/graphics/fb0/free_scale
```

Software Guide (2) - Android

- We're planning to release CVBS functionality soon. The version will be specified here after new release.

Please refer to the following example.

```
setenv hdmimode "480cvbs"
setenv cvbs "480cvbs"

# Display Auto Detection
# "false" or "true"
setenv display_autodetect "false"

setenv bootargs "${rootopt} ${consoleopt} hdmimode=${hdmimode} cvbs=${cvbs}
${cmode} ${hdmitx} vout=${vout_mode} disablehpd=${disablehpd}
logo=${logoopt} ${androidopt} ${selinuxopt}
suspend_hdmiphy=${suspend_hdmiphy} led_onoff=${led_onoff}
max_freq=${max_freq} maxcpus=${maxcpus} disable_vu7=${disable_vu7}
touch_invert_x=${touch_invert_x} touch_invert_y=${touch_invert_y}
usbmulticam=${usbmulticam} gpiopower=${gpiopower}
backlight_pwm=${backlight_pwm} ddrlock=${ddrlock}
test_mt_pid=${test_mt_pid} test_mt_vid=${test_mt_vid}"
```

Overscan

As we tested cvbs mode with our monitors, overscan setting is needed. For example, the following values can be used.

```
### 480cvbs
$ wm overscan 30,25,30,10

### 576cvbs
$ wm overscan 40,10,50,110
```

From:
<http://wiki.odroid.com/> - **ODROID Wiki**

Permanent link:
http://wiki.odroid.com/odroid-c2/application_note/external_connector/cvbs



Last update: **2020/03/31 03:11**