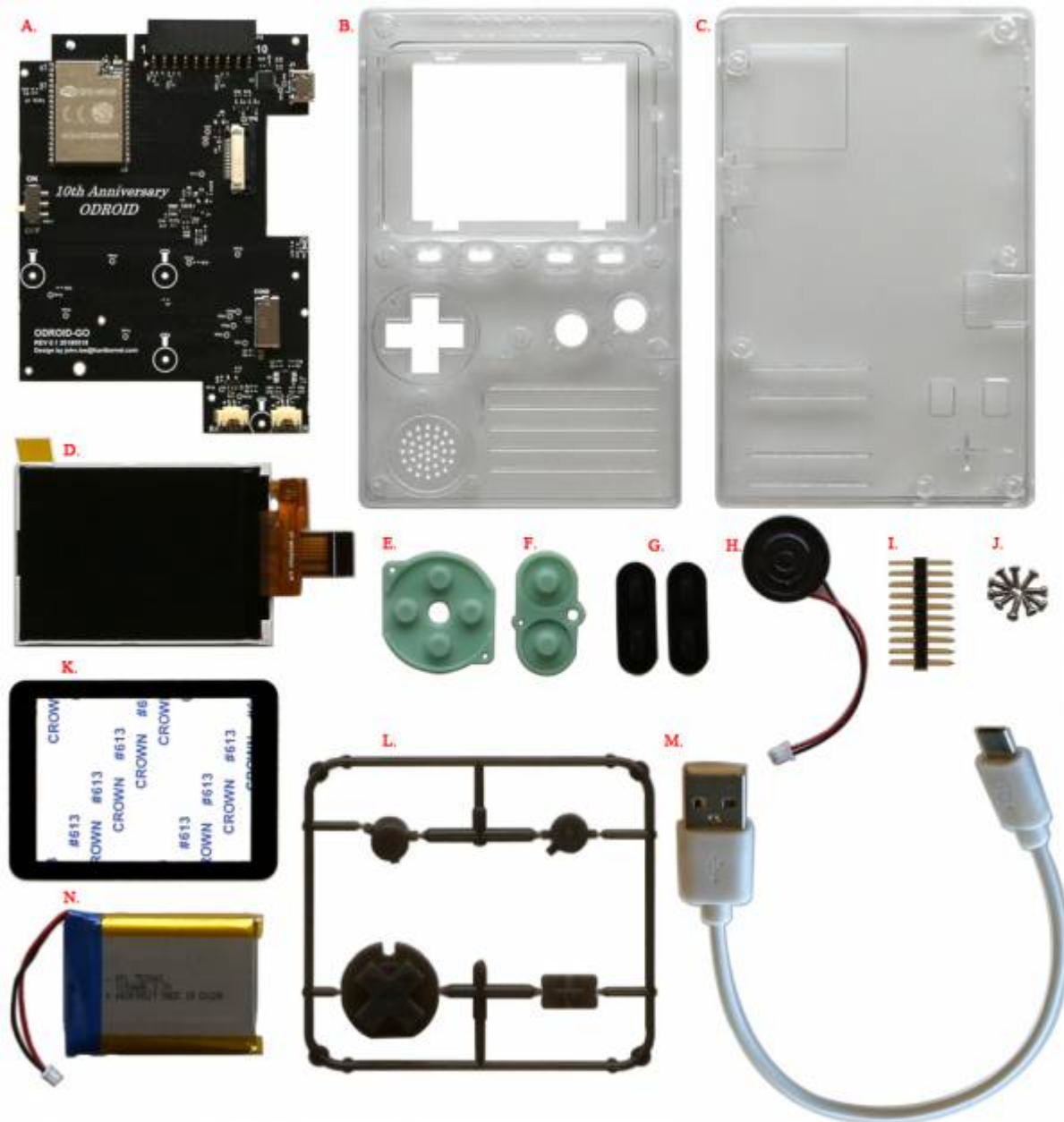


Building the ODROID-GO kit

This page shows how to assemble the ODROID-GO kit.

The enclosed parts in the ODROID-GO package



- A. 1x ODROID-GO Board
- B. 1x Front enclosure
- C. 1x Back enclosure
- D. 1x 2.4" LCD
- E. 1x D-Pad Rubber
- F. 1x A,B Button Pad Rubber
- G. 2x Select Buttons Rubber
- H. 1x 8 Ohm 0.5W Speaker

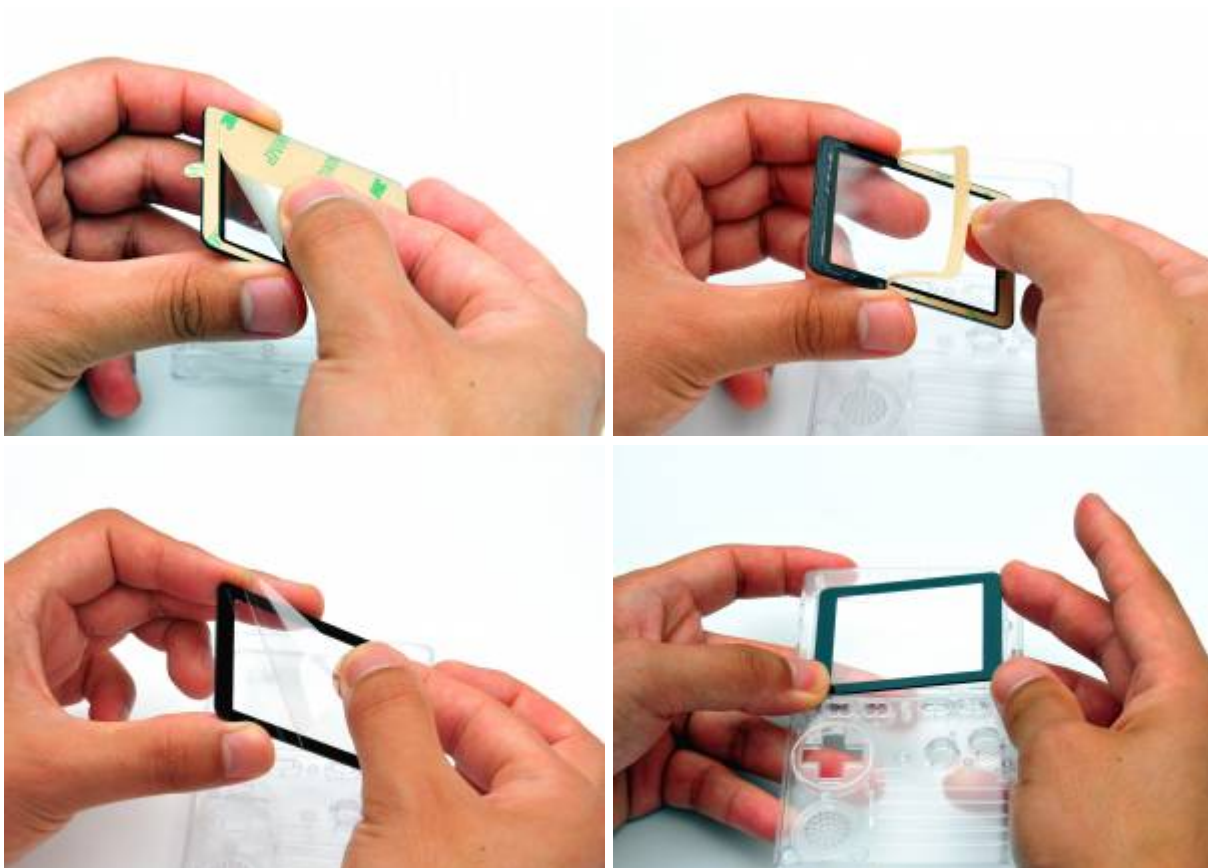
- I. 1x 10pin mail header
- J. 10x Screws
- K. 1x LCD window
- L. 1x Plastic D-Pad, Button set
- M. 1x Micro USB Cable
- N. 1x 1200mAh Li-ion battery

Build instruction

This section shows you how you can build the ODROID-GO. Please carefully follow the instruction below.

LCD window

First, in order to protect LCD screen, you have to place the enclosed plastic screen cover on the front enclosure. Please completely remove the sticker on the back of the screen cover and carefully place it on the front enclosure.



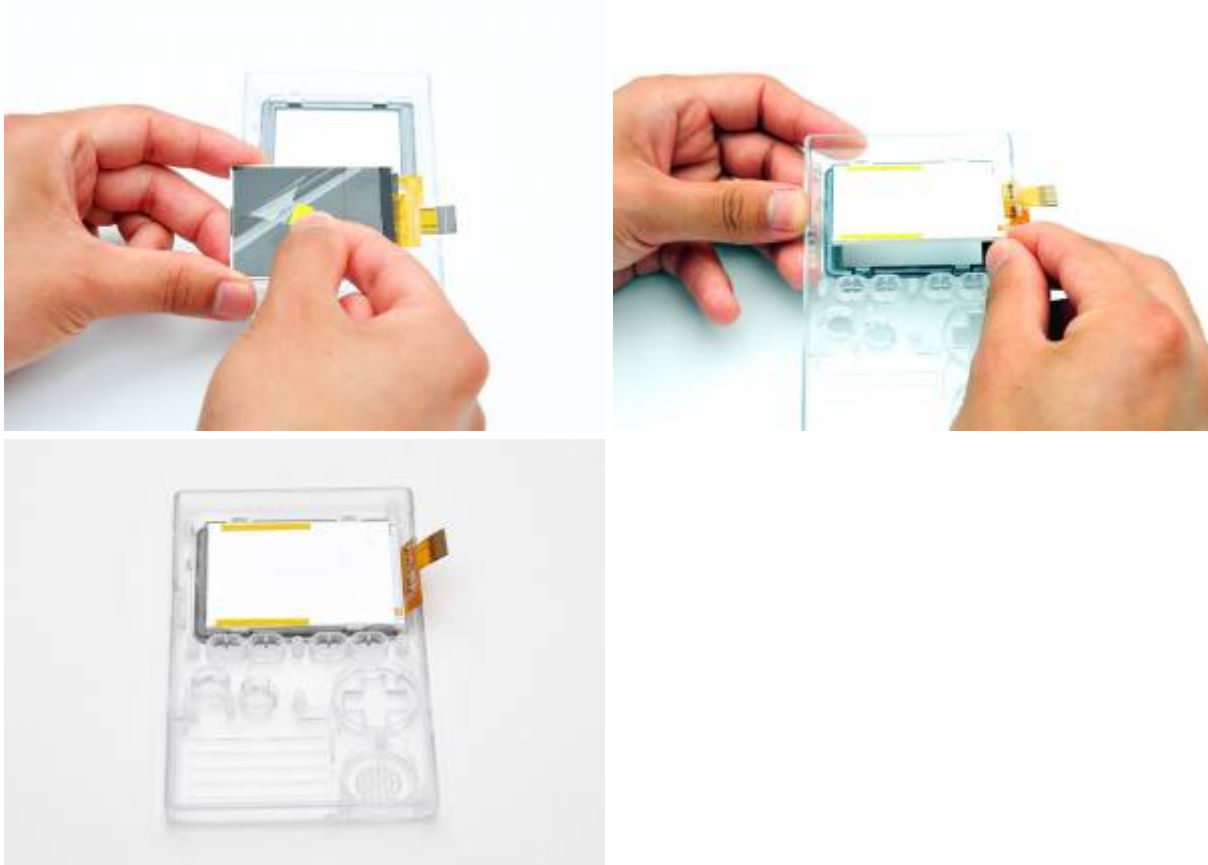
LCD screen

Second, you need to attach the 2.4" LCD screen to the front enclosure. Please note that you must remove the vinyl cover on the LCD screen before placing LCD module in the front enclosure. Also, you would need to slightly wipe or blow out the window cover or LCD screen in order to remove any dust

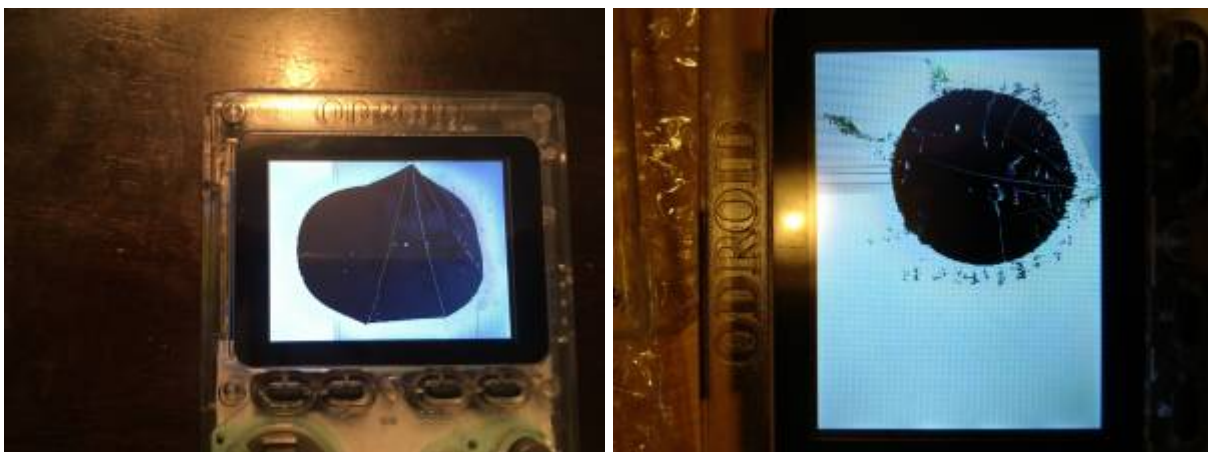
or fingerprints.

Please be careful when you insert your LCD into the front enclosure, otherwise the LCD module may break.

Refer to this video before assembling: [Youtube - ODROID-GO LCD Assembly](#)



If you press the edges of the LCD panel too hard with your fingers while inserting the LCD, it may damage the glass as shown below pictures.



Play buttons

Third, place the play buttons in the front enclosure. You need to cut and remove the plastic buttons (an arrow key piece, buttons 'A' and 'B') from the plastic button set enclosed, and then put the rubber pieces on top of the plastic keys.



Main board

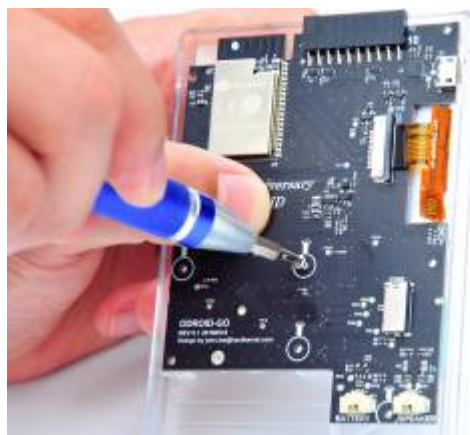
Next is the main part of the assembling instructions. Please carefully put the ODROID-GO board in the front enclosure and connect the LCD cable to the board.

You have to fully insert the LCD FPC cable into the connector. Otherwise, the display will not work from time to time.

The white line of FPC cable has to reach very close to the connector locker.

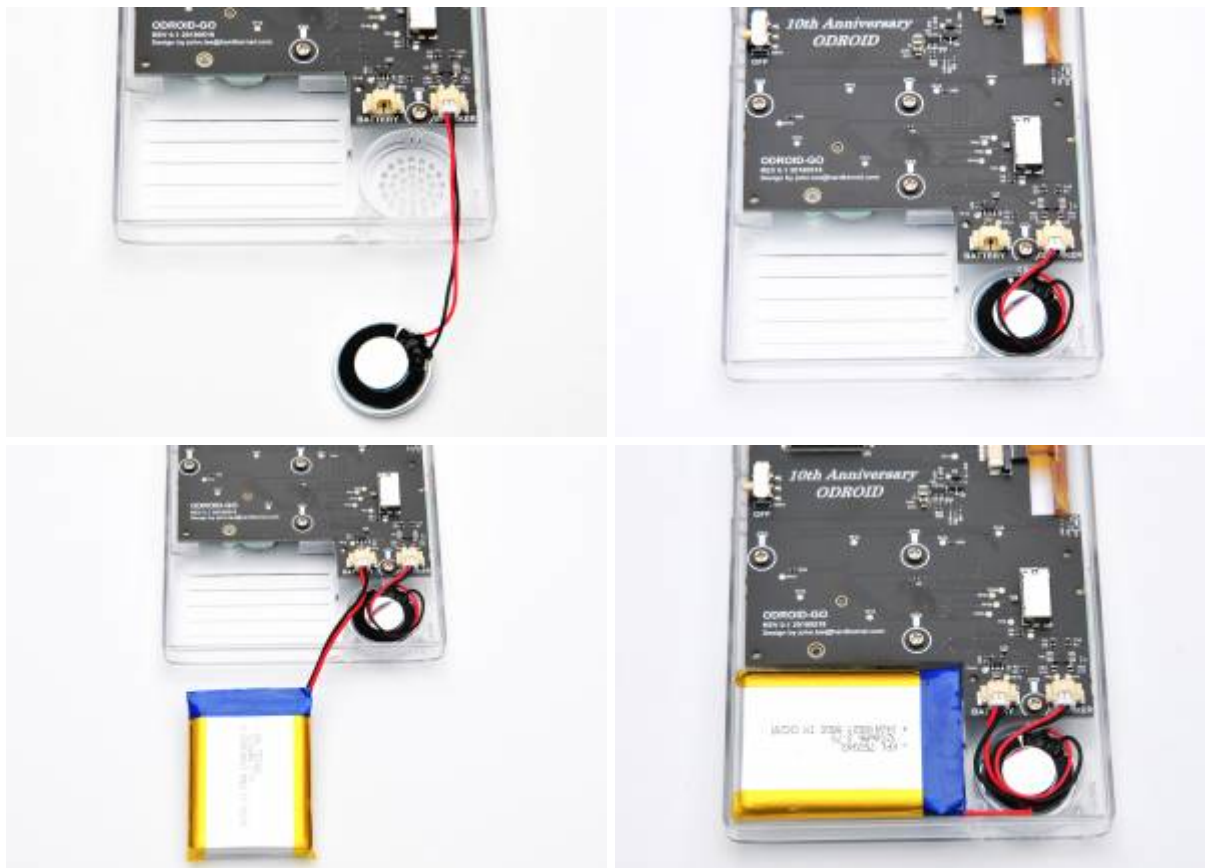
After the LCD screen cable is firmly connected, you can fasten the main board with the screws (4x) enclosed.

Please very carefully connect the LCD to the ODROID-GO board, otherwise the screen may break.





You also need to connect the battery pack and speaker module to the ODROID-GO board. It would be a good idea to wrap the speaker wires as shown in the picture, otherwise, it would be difficult to close the back enclosure.



Power key

Another piece which you have to cut on the plastic button set is the power key, and you can place the

power switch at the side of the ODROID-GO.



Close the back enclosure

Finally, you can close the back enclosure of the ODROID-GO with the screws (6x) enclosed. You can also try to turn on the ODROID-GO before closing the back enclosure.



Testing before playing

You can turn the device on or off with the power switch on the right side of the ODROID-GO. Please softly slide the key up to turn on or down to turn off.



Memory card

Since the ODROID-GO loads the games from the memory card (Micro SD type), you must insert a memory card in the card slot on the bottom of the ODROID-GO. In order to copy the game images to the memory card, please visit the [link](#).

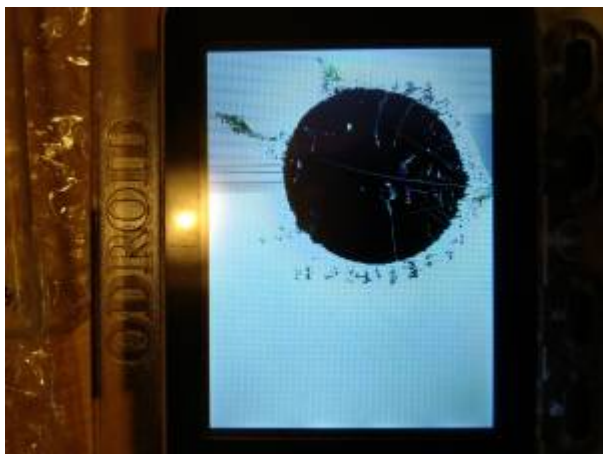
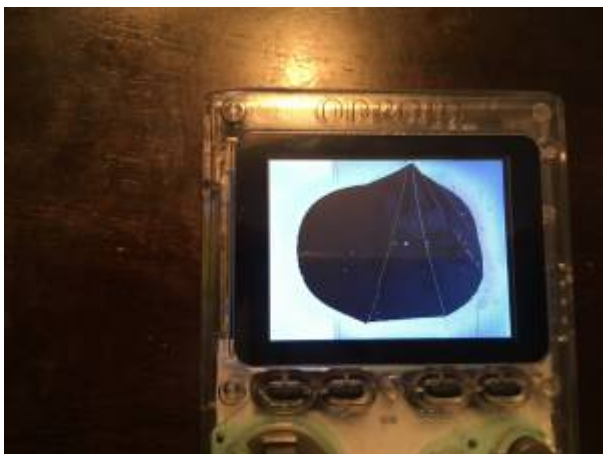


If the memory card is not inserted or fails for any reason, you will have an error screen when you turn on the ODROID-GO.



Warning & Caution

If you press the edges of the LCD panel too hard with your fingers while inserting the LCD, it may damage the TFT glass as shown below pictures.



From:

<http://wiki.odroid.com/> - **ODROID Wiki**

Permanent link:

http://wiki.odroid.com/odroid_go/go_assembling?rev=1531809681

Last update: **2018/07/17 07:41**

