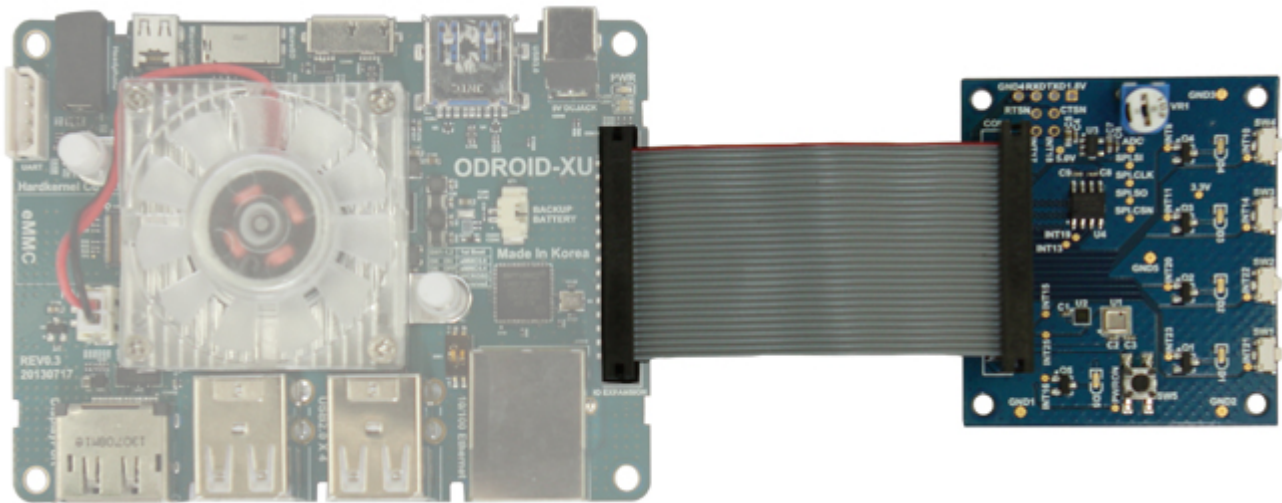


Basics of 30pin Port

The **ODROID-XU3** provides 30Pin GPIOs.



You need to enter into super-user mode first to run below commands !!

```
sudo su
```

Easy to use GPIOs

First, you refer to below link.

You check Export number that you want to use GPIO.

[Pin description](#)

Create a GPIO file access.

You can access GPIOs using sysfs interface.

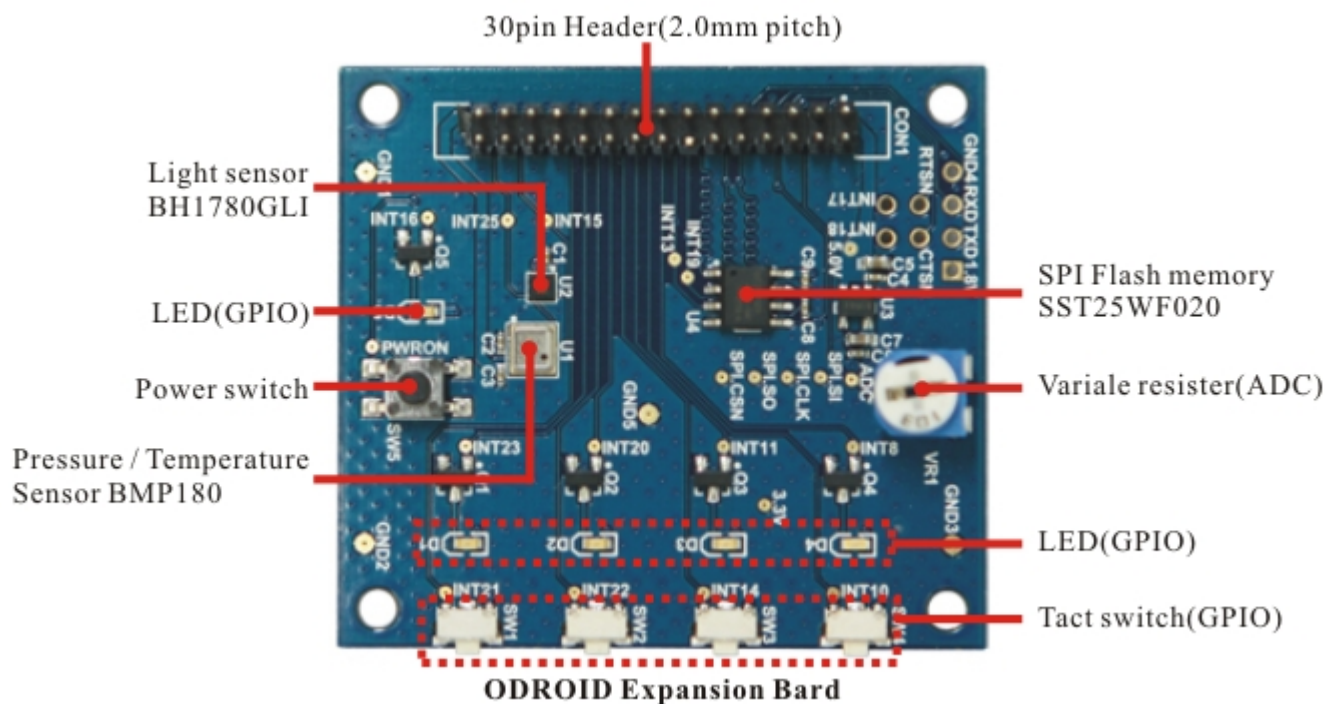
```
echo 29 > /sys/class/gpio/export
```

Configure the pin direction (in/out)

```
echo in > /sys/class/gpio/gpio29/direction
```

Read a value

```
cat /sys/class/gpio/gpio29/value
```



Expansion Board

LED ON/OFF example

If you want to use LED ON/OFF, first you check the NET name in Expansion Board.

For example, The NET name of D1 is INT23.

According to below link, The Export GPIO number is #31.

Pin description

```
echo 31 > /sys/class/gpio/export  
echo out > /sys/class/gpio/gpio31/direction
```

LED ON

```
echo 1 > /sys/class/gpio/gpio31/value
```

LED OFF

```
echo > /sys/class/gpio/gpio31/value
```

From:
<http://wiki.odroid.com/> - **ODROID Wiki**

Permanent link:
http://wiki.odroid.com/old_product/odroid-xu3/hardware/xu3_enhancement_gpio30

Last update: **2017/07/26 10:41**

